

# GUNDLACH SUBDIVISION

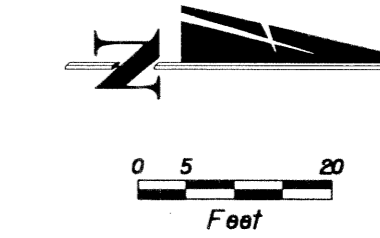
171

A REPLAT OF A PORTION OF BLOCK B AND PORTIONS OF PINE LANE AND MARY LANE "BONITA HEIGHTS" AS RECORDED IN PLAT BOOK 21, PAGE 79, PUBLIC RECORDS OF PALM BEACH COUNTY, FLORIDA IN SECTION 33, TOWNSHIP 44 SOUTH, RANGE 43 EAST TOWN OF LANTANA, PALM BEACH COUNTY, FLORIDA

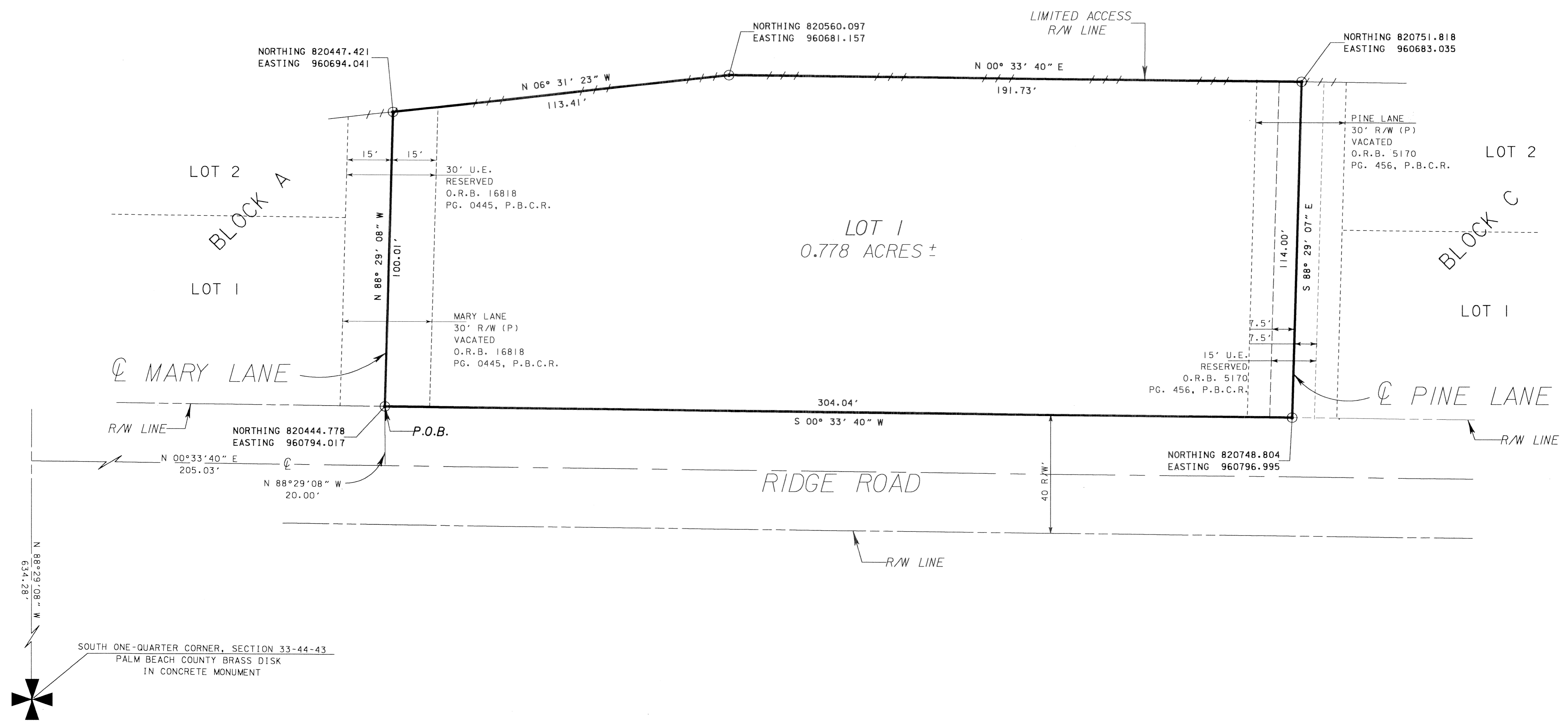
JUNE 2004  
SHEET 2 OF 2

**LEGEND**

- ⊕ - CENTERLINE
- FDOT - FLORIDA DEPARTMENT OF TRANSPORTATION
- O.R.B. - OFFICIAL RECORDS BOOK
- (P) - PLAT DATA
- P.B.C.R. - PALM BEACH COUNTY RECORDS
- PG. - PAGE
- P.O.B. - POINT OF BEGINNING
- PRM - PERMANENT REFERENCE MONUMENT
- R/W - RIGHT OF WAY
- S.R. - STATE ROAD
- U.E. - UTILITY EASEMENT
- - LIMITED ACCESS RIGHT OF WAY
- ⊙ - PRM



S.R. 9 (I-95)  
FDOT PROJECT 93220-3505



THIS INSTRUMENT WAS PREPARED BY

